
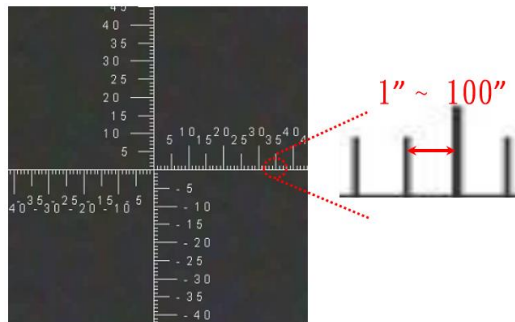


Product Image	Model CT-001		Collimator	Focal Length	550 mm
				Tube Diameter	55 mm
			Camera	Focal Ratio	1:10
			Pixel	Color 2.0M	
			Resolution (H x V)	1920 x 1080	
			Sensor	CMOS 1/2.7"	
			Cable	USB Port	

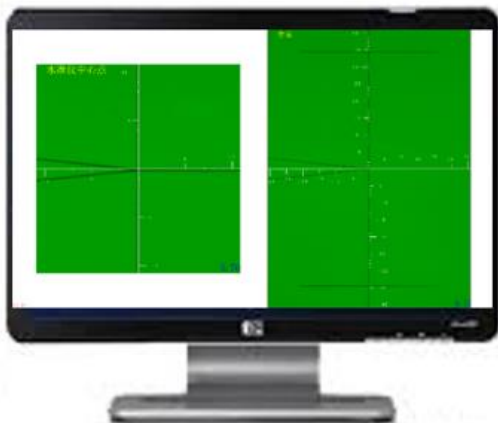
Product Features

- Set 1" to 100"/grid the scale value of the electronic reticle → **Highly increased measurement accuracy**

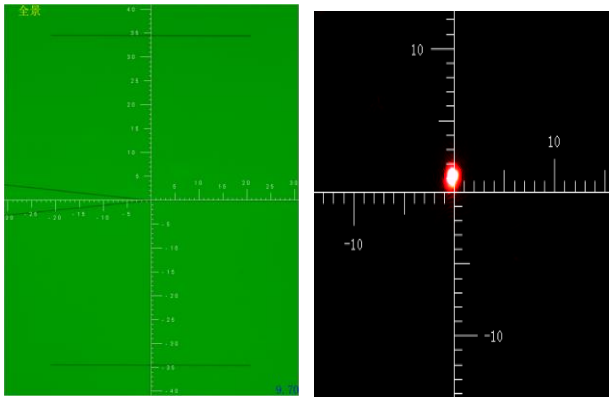


accuracy

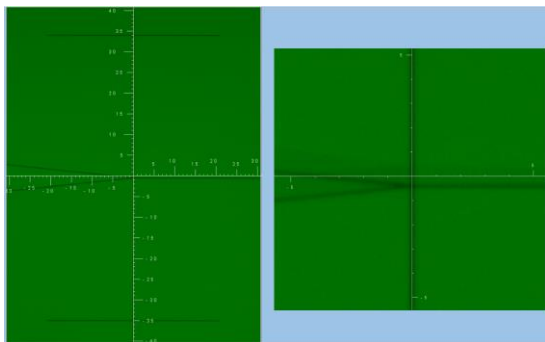
- Computer screen shows the image of digital status → **No more visual errors!**



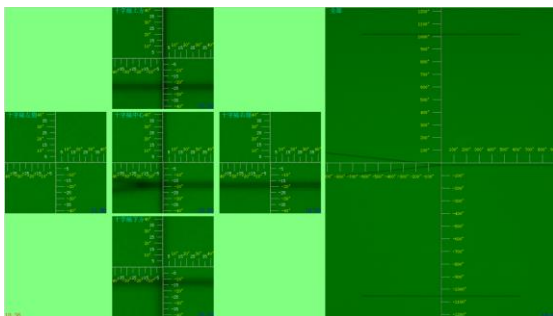
- High-resolution sensor captures the image → **Make you clearly see the crosshairs and laser spots**



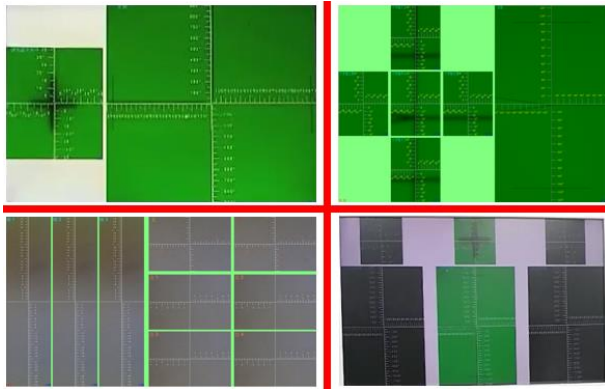
- Enlarge image function → **Keep your eyes from fatigue, see the laser details clearly!**



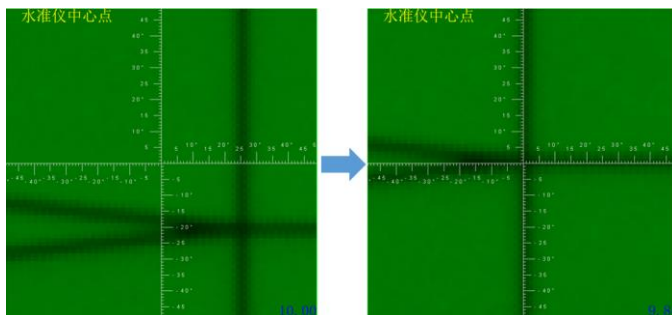
- Picture-in-picture function → **Display multiple laser areas of the image on the same screen**



- Picture setting function. → **Set your own application project screen**



- Doing Collimator calibration → **Only one minute with CTTN software**



Product Application

Mainly used for the Laser optical equipment production 、 installation 、 calibration 、 inspection.

- Laser Level 、 Auto Level 、 Theodolite 、 Total Station production, calibration or routine maintenance
- Angle measurement and reference alignment of the Laser optical equipment crosshairs and laser point
- Instrument sales company, optical instrument repair station, pre-sale and post-sale inspection and calibration services.

Product Advantages

It is efficient than normal Collimator to use our product as combine with our special software.

- Display numbers in digital form → Help you build scientific reports.
- Using electronic reticle→ Set 1" to 100"/grid the scale value of the electronic reticle, it is 30 times more than normal Collimator.
- Powerful software→ The calibration speed is increased by more than 50%.
- Compared with the traditional actual distance target station, it can effectively reduce the space by more than 85%.